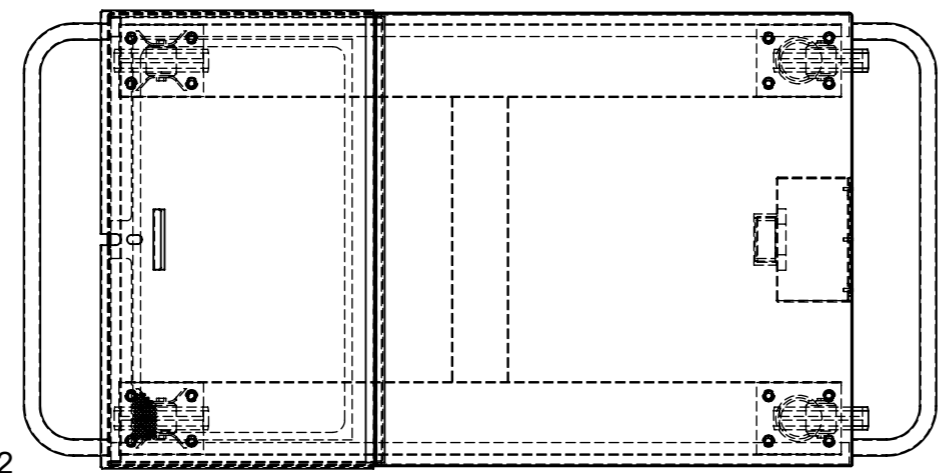


DETAIL B
SCALE 1 : 4



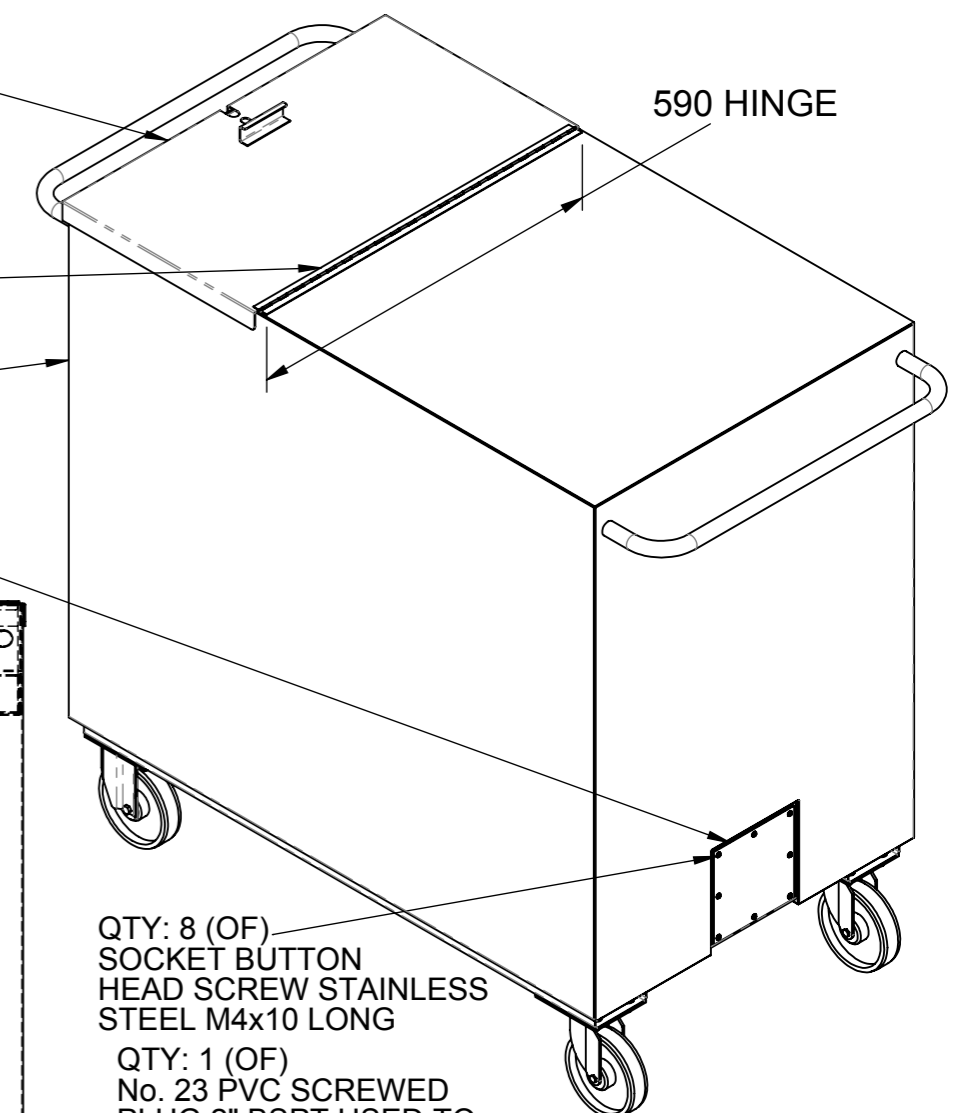
QTY: 1 (OF)
1792.005-M02.02
(FILTER TRAY)

QTY: 1 (OF)
1792.005-M02.03 (LID)

QTY: 1 (OF)
STAINLESS PIANO
HINGE TACK WELD OR
ATTACH VIA STAINLESS
SELF TAPPERS TO LID
AND BIN AS SHOWN

QTY: 1 (OF)
1792.005-M02.01 (BIN)

QTY: 1 (OF)
1792.005-M01.05
(BLANKING PLATE)



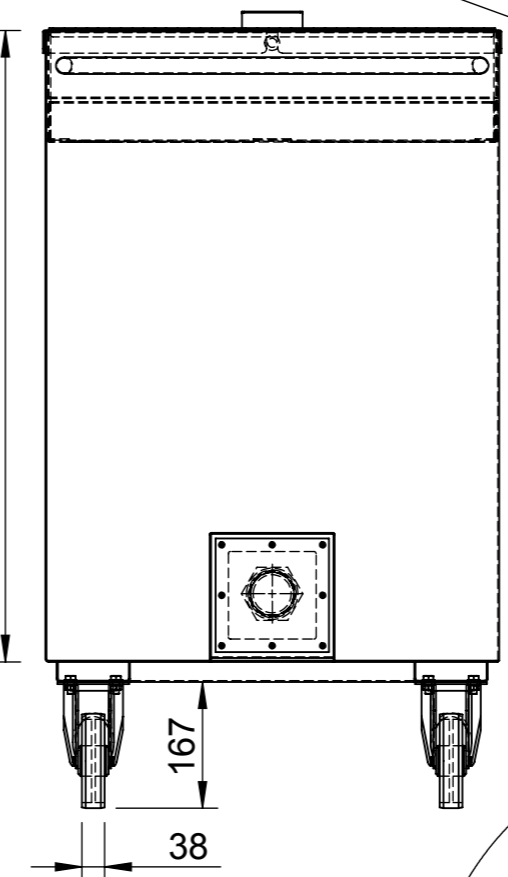
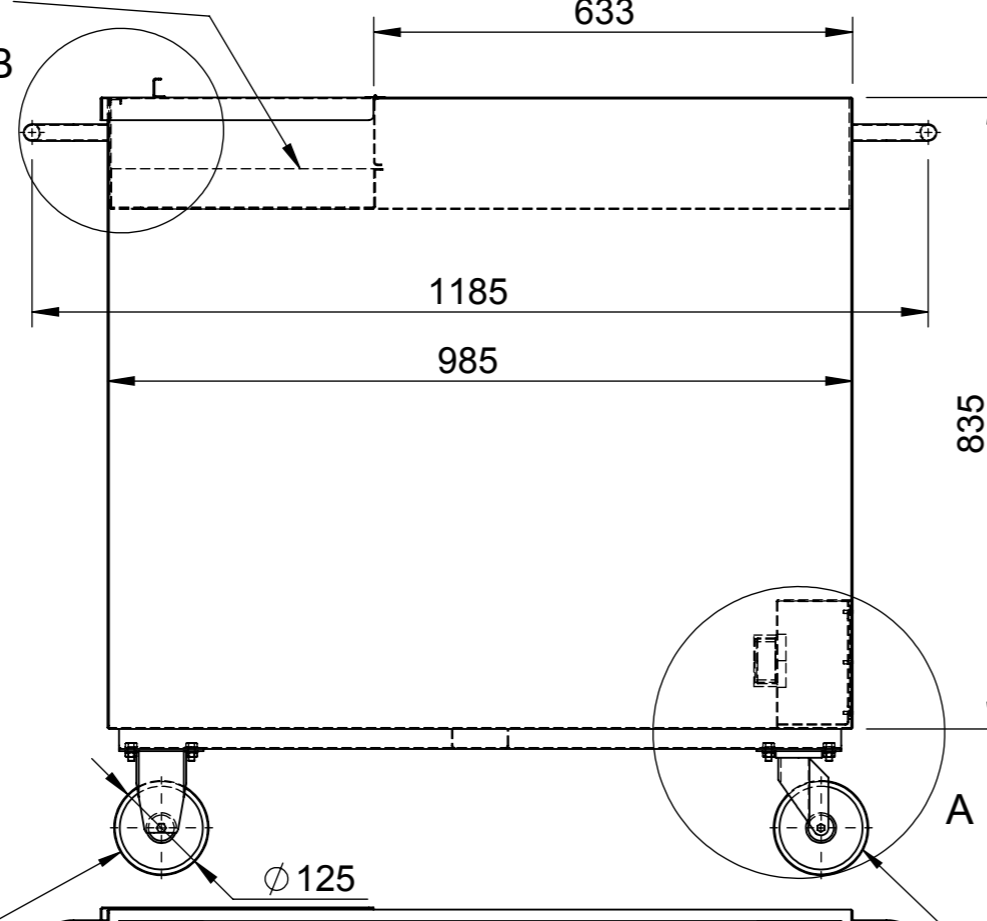
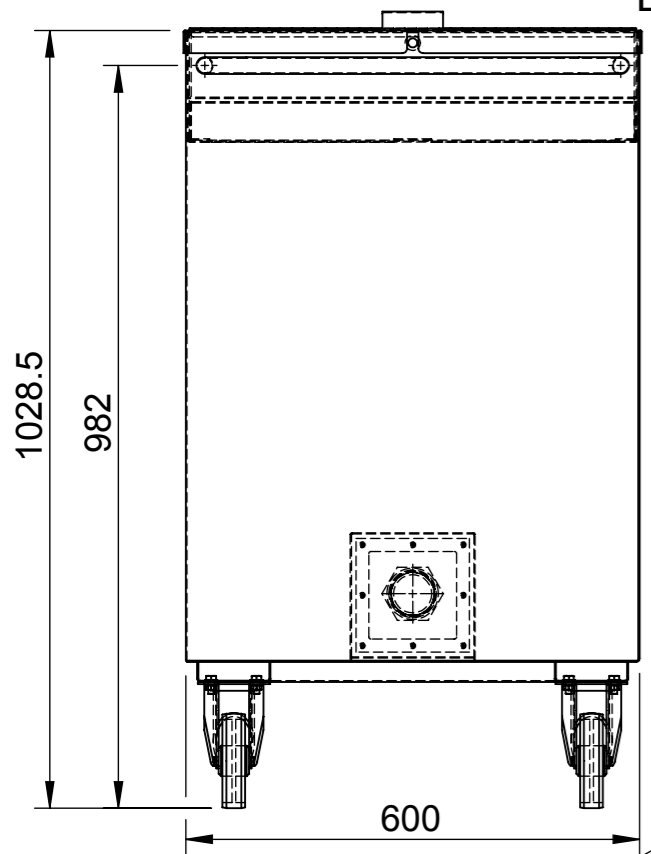
QTY: 8 (OF)
SOCKET BUTTON
HEAD SCREW STAINLESS
STEEL M4x10 LONG

QTY: 1 (OF)
No. 23 PVC SCREWED
PLUG 2" BSPT USED TO
PLUG HEATER SOCKET
(USE GASKET UNDER
PLUG HEAD)

QTY: 1 (OF)
1792.005-M01.04
(RUBBER GASKET)

QTY: 16 (OF)
HEX BOLT M8 X 16 LONG
4.6 COMMERCIAL GRADE - ZINC
PLATED COMPLETE WITH:
HEX NUT WITH SPRING WASHER
PLAIN WASHER (UNDER BOLT HEAD)

NOTE: ALTERNATIVELY USE M8
NUTSERTS SECURED INTO THE BIN
CHANNELS WITH BOLT AND SPRING
WASHER TO SECURE CASTORS.
VENDOR TO ADJUST HOLE SIZES IN
CHANNEL TO SUIT. THIS DRAWING
SET WILL NOT BE MODIFIED TO SUIT
NUTSERTS.



QTY: 2 (OF)
RICHMOND CASTOR
RIGID TYPE: R5011
NYLON WHEEL
PLAIN BEARING
LOAD CAPACITY:
250KG

QTY: 2 (OF)
RICHMOND CASTOR
SWIVEL TYPE: S5010
NYLON WHEEL
PLAIN BEARING
LOAD CAPACITY:
230KG

DETAIL A
SCALE 1 : 5

BOTTOM VIEW (HIDDEN LINES REMOVED)

DO NOT SCALE THIS DRAWING.
Use only dimensions shown.
All dimensions should be checked on site.
Drawing to be read in conjunction with the
associated notes and specification/s.
Drawing to be read in conjunction with all
other services, architectural and structural.
These designs, drawings and
specifications are copyright © and must not
be altered, reproduced or copied wholly or
in any part without the written permission
of SEMF Pty Ltd. All rights reserved.

ALL DIMENSIONS IN MM
GENERAL TOLERANCING
AS FOLLOWS U.O.S.
NO DECIMAL ±1.0
1 DECIMAL ±0.1
2 DECIMALS ±0.01
ANGLES ±1.0
SURFACE FINISH
REFER TO
AS 1100.201 - 1992
SECTION 3

GEOMETRIC SYMBOLS
AS 1100.101 - 1992
— STRAIGHTNESS / FLATNESS
// PARALLELISM ○ ROUNDNESS
⊥ SQUARENESS ⊗ CYLINDRICITY
∠ ANGULARITY ~ PROFILE-LINE
⊕ POSITION ▽ PROFILE-SURFACE
⊙ CONCENTRICITY / RUNOUT
= SYMMETRY / TOTAL RUNOUT
MAXIMUM MATERIAL CONDITION (M)
DATUM IDENTIFICATION - DATUM

QUANTITY	MATERIAL
1 (OF)	304 STAINLESS STEEL CONSTRUCTION
FABRICATION	N/A
MACHINING	N/A
FINISH	REMOVE ALL BURRS & SHARP EDGES
HEAT TREATMENT	N/A
SURFACE FINISH	N/A



**SCIENTISTS
ENGINEERS
MANAGERS &
FACILITATORS**

SEMFP Pty Ltd
22-28 Compark Circuit
Mulgrave Victoria 3170
Tel: (+61 3) 8545 0400
Fax: (+61 3) 8545 0499

Offices Located:
Brisbane, Canberra,
Gladstone, Hobart,
Launceston, Melbourne
and Sydney

Website: www.semf.com.au
ACN 117 452 814 ABN 24 117 452 814

DRAWING CHECK			CO-ORDINATION CHECK		
DRAWN	SIGNATURE	DATE	STRUCT.	SIGNATURE	DATE
WM		20/05/2010			
DESIGNED			MECH.		
WM					
CHECKED			ELECT.		
WM					
CLIENT			HYDR./CIVIL		
			FIRE/ENV.		
DRAWING CREATED	2/03/2010				
MODEL CREATED	9/02/2010				

NAME	
PROJECT	OIL BIN UPGRADE PROGRAM
CLIENT	AUSCOL PTY LTD
SUB ASSY	
MAIN ASSY	400L BIN (NO HEATER)

STATUS		
SCALE	1:10	SHT No. 1 OF 1
DRG No.	1792.005-M02.	REV. 0

PROJECT		
PROJECT	OIL BIN UPGRADE PROGRAM	
CLIENT	AUSCOL PTY LTD	
STATUS	PRELIMINARY ONLY	
SCALE	1:10	SHT No. 1 OF 1
DRG No.	1792.005-M02.	REV. 0